



Video intercom with handset

FA01669-EN



AGT V EVO

General Precautions

Installation, programming, commissioning and maintenance must only be carried out by qualified, expert technicians and in full compliance with the applicable law. • Before carrying out any cleaning or maintenance, disconnect the device from the power supply. • Only use this product for its intended purpose. Any other use is hazardous. • Came S.p.A. is not liable for any damage caused by improper, erroneous or unreasonable use. • Do not obstruct the ventilation or heat dissipation vents or slots.

Legislative References

This product complies with the applicable standards in force at the time of manufacturing.

This device complies with part 15 of the FCC Rules.

Operation is subject to the following two conditions:

- (1) this device may not cause harmful interference
- (2) this device must accept any interference received, including interference that may cause undesired operation.

Cleaning the device

To clean the device, use a soft, slightly damp cloth only. Wet the cloth with water or an ammonia solution. Alternatively, use an oil-based soap (e.g. Marseille soap) or a gentle makeup remover (e.g. a cleanser or micellar water).

Always wipe the surface with a damp cloth (wet with just water) after cleaning. Never use alcohol-based solutions or solutions containing surfactants.

Dismantling and disposal

Dispose of the packaging and the device responsibly at the end of its life cycle, in compliance with the laws in force in the country where the product is used. The recyclable components are marked with a symbol and the material ID marker.

THE DATA AND INFORMATION IN THIS MANUAL MAY BE CHANGED AT ANY TIME AND WITHOUT NOTICE.

THE MEASUREMENTS, UNLESS OTHERWISE STATED, ARE IN MILLIMETRES.

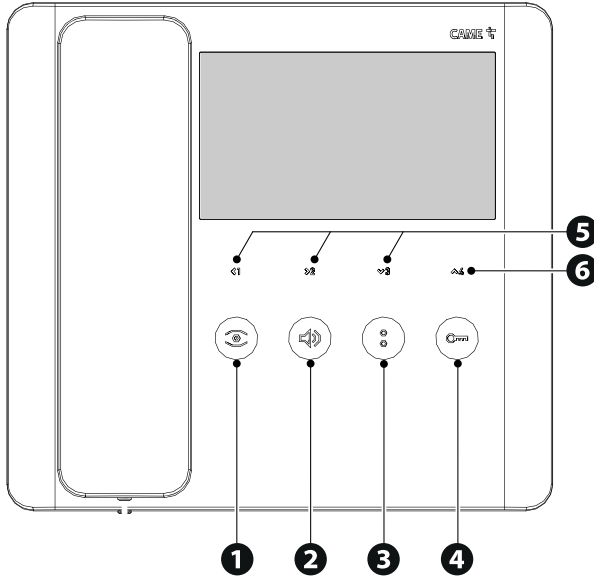
PRODUCT DATA AND INFORMATION

Description

AGT V EVO

Video intercom with handset, soft-touch keys, 5" LCD display, 4 keys for intercom calls or auxiliary controls, white. Button for adjusting/excluding the ringtone.

Description of the buttons



- ❶ Activate video and enable/disable AUTOMATIC DOOR RELEASE function button
 - ❷ Audio settings button
 - ❸ Activate auxiliary services and porter calls button
 - ❹ DOOR RELEASE and OPEN GATE function button
 - ❺ Communication buttons between internal numbers (INTERCOM) and auxiliary controls (AUX)*
 - ❻ Auxiliary (AUX 5), PANIC function and activate SECOND FUNCTION button*
- * With the handset off the hook, the buttons act as INTERCOM commands. With the handset on the hook, they act as auxiliary controls (AUX).

	❶	❷	❸	❹
Default INTERCOM	Internal 1	Internal 2	Internal 3	[Activate/Deactivate SECOND FUNCTION]
Second function	Internal 4	Internal 5	Internal 6	[Activate/Deactivate SECOND FUNCTION]
Auxiliary controls	AUX 1	AUX 3	AUX 4	AUX 5

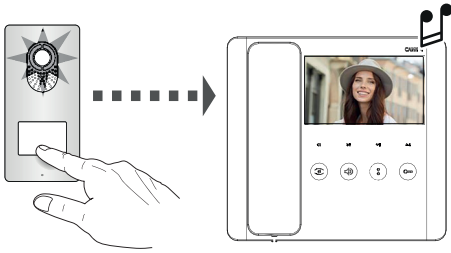
LED status key

	FLASHING	FIXED	OFF
👁️		AUTOMATIC DOOR RELEASE enabled	AUTOMATIC DOOR RELEASE disabled
🔊	Entering melody and calling ring configuration mode	Ringtone volume off	
📞	PANIC SIGNAL sent	The porter would like to be called back	
🔑	Procedure in process	DOOR STATUS active: door open GATE STATUS active: gate open	DOOR STATUS active: door closed GATE STATUS active: gate closed
❶			
❷	SECOND FUNCTION active		
❸			
❹	SECOND FUNCTION active		

STANDARD FUNCTIONS

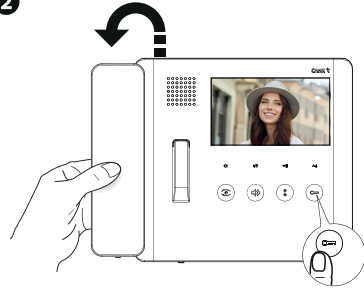
Communicating with the outside and DOOR RELEASE function


1



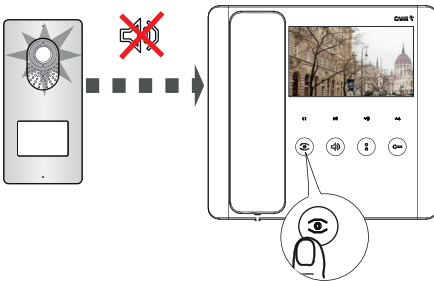
When the bell is pressed from the outside, the video receiver rings.


2

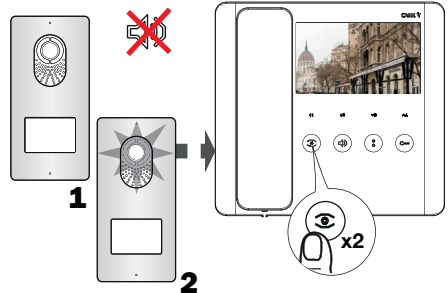



Pick up the handset to answer the call.
Press the  button to open the door.
Put the handset back on the hook to end the call.


Video activation



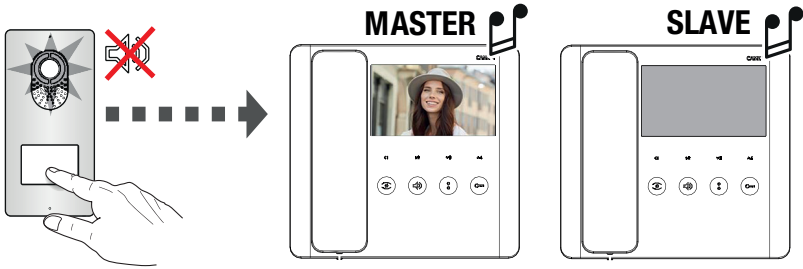
Press the  button to activate video communication with the outside.



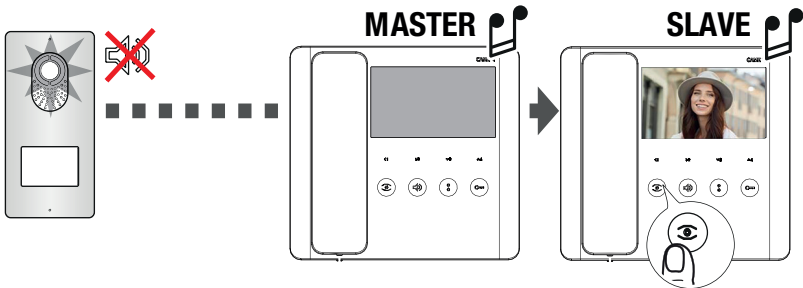
Where there are multiple entry panels, keep pressing the  button to display all the entry panels in sequence.

 If the line is busy, the video camera will not activate. If the line is busy, you will hear three consecutive beeps.

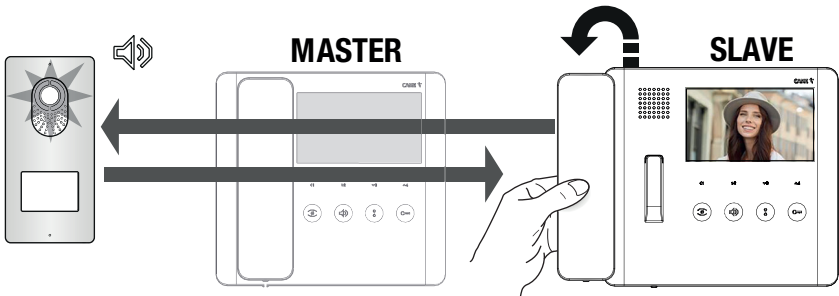
Video toggling



Where there are calls on more than one device, all devices will ring, but the video will only be activated on the video receivers configured as MASTER.

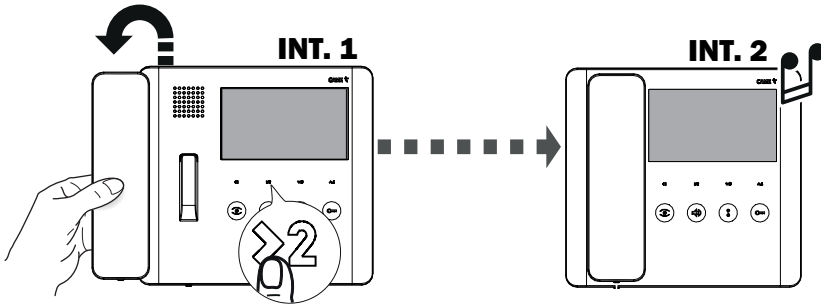


Press the  button on the SLAVE video receiver you would like to transfer the video to.




Pick up the handset on the SLAVE video receiver to activate audio communication.

Communication between internal receivers (INTERCOM function)




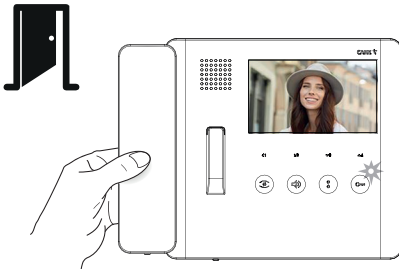
To start communicating with another internal receiver (INTERCOM), pick up the handset and press the button associated with the internal receiver you want to call.

 If the line is busy, you will hear three consecutive beeps.


 During a conversation between internal receivers, the devices beep every 5 seconds to signal a call from the outside.

DOOR STATUS function

 The system must be correctly set up.




Use this function to view the current door status (open/closed) via the LED on the  button.

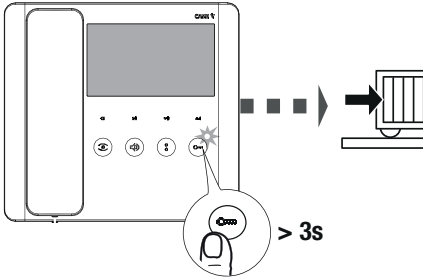
 The function is active during communication with the outside.

OPEN GATE and GATE STATUS function

The open gate function is used to activate the open/close gate function and view the gate status (open/closed) via the LED on the  button.

 The function must be activated during system programming.

 The DOOR STATUS function is active by default. The OPEN GATE/GATE STATUS function must be correctly configured. The two functions cannot both be active at the same time.

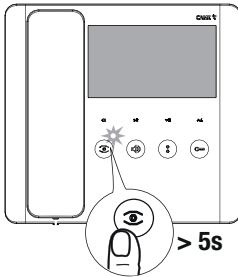



Press and hold the  button for more than 3 seconds to send an open or close gate command.

AUTOMATIC DOOR RELEASE function

This function allows you to automatically open the entrance when you ring the bell from the entry panel. Communication is not activated and the call ends automatically. It is recommended for professional practices.

 The function is available by default. It can be removed during system programming.

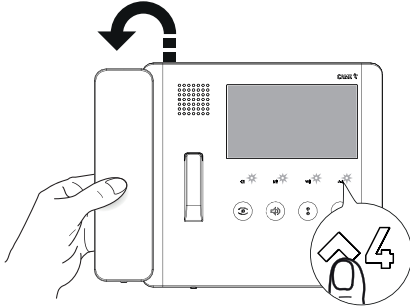


Press and hold the  button for more than 5 seconds to activate or deactivate the function.

 The  LED switches on to indicate that the function is active.

SECOND FUNCTION

In the DEFAULT configuration, the 1, 2 and 3 buttons are used for calling the respective internal receivers. Using the SECOND FUNCTION, the same buttons can be used to call internal receivers 4, 5 and 6.



To enable the function, pick up the handset and press 4.
 Release the button within 2 seconds.
With the function active, the 1, 2, 3 and 4 button LEDs will flash.

Press the 4 button again to disable the function manually.

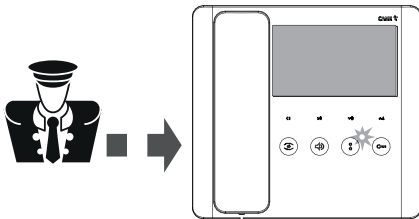
If the function is not disabled manually, it remains active for approximately 10 seconds.

Porter functions

These functions are only available where there is a porter's desk.

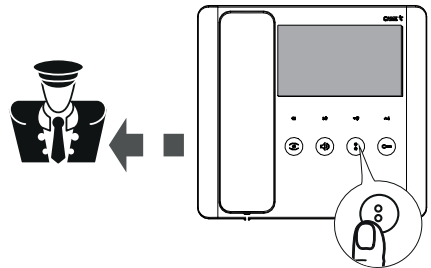
Each function must be correctly set up and configured during installation.

Call notification from the porter



If the porter wishes to be called back, the LED turns on.
 The LED turns off when communication with the porter starts.

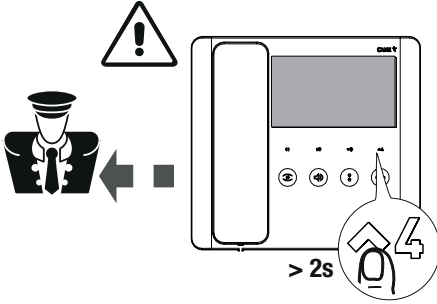
Request for call to porter



Press the button to let the porter know that you want to be called back.

PANIC function

The PANIC function is a priority call to the porter. Use this function in urgent or emergency situations.

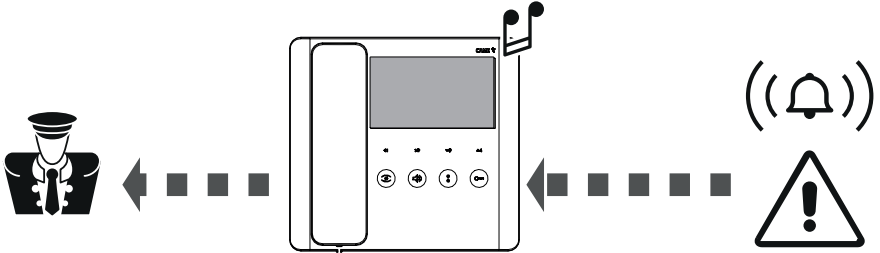


Press and hold the button for more than 2 seconds to send a panic signal to the porter's desk.

The button LED flashes when the panic signal is received at the porter's desk.

Alarm contact

During installation, an alarm contact can be configured external to the video receiver.



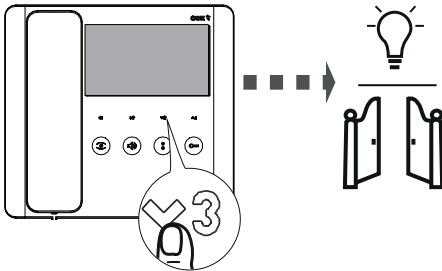
When the alarm contact is activated, an emergency signal is sent directly to the porter's desk.

The video receiver will beep intermittently to signal activation.

Auxiliary controls (AUX function)

Auxiliary controls are customised, accessory functions set up when the video intercom is installed.

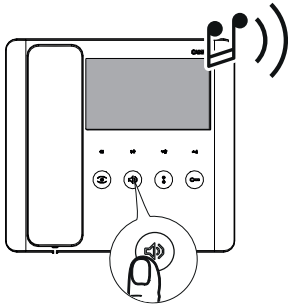
Examples include switching on a light or opening a gate.






Press the desired AUX button to activate the associated auxiliary control.

Accessory devices may need to be installed, depending on the type of command to be activated.

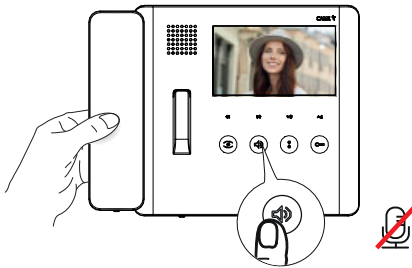
Ringtone volume level control





Press the  button to adjust the volume of the call ringtone. Each press of the button corresponds to an intensity level (low, medium, high and off).

 **With the volume set to off, the red LED on the  button lights up.**

Activating/deactivating the microphone



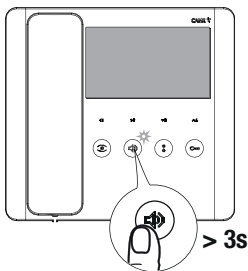
In conversation, press the  button to switch off the microphone.


 **The microphone remains off until the  button is pressed again or until the end of the call.**

Configuring melodies and call rings

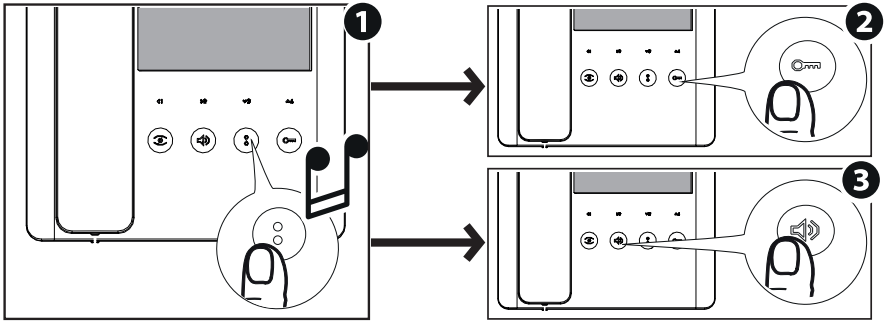
 Perform the steps below in sequence.

Entering configuration mode



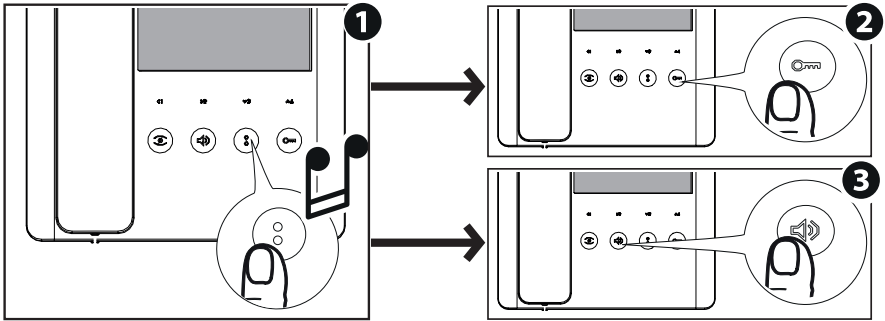
Press and hold the  button for at least 3 seconds. A short buzzing sound and a red flashing LED confirm that you have entered configuration mode.

Configuring the melody associated with a call from the outside



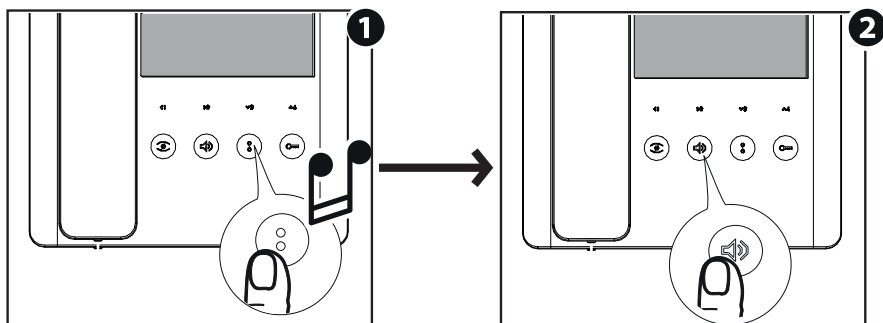
- 1** Press the button to listen to the melodies in sequence.
- 2** Press the button to select the melody and automatically move on to configuring the melody associated with the landing call.
- 3** Alternatively, press the button to select the melody and exit programming.

Configuring the melody associated with a landing call




- 1** Press the button to listen to the melodies in sequence.
- 2** Press the button to select the melody and automatically move on to configuring the number of call rings.
- 3** Alternatively, press the button to select the melody and exit programming.

Configuring the number of call rings

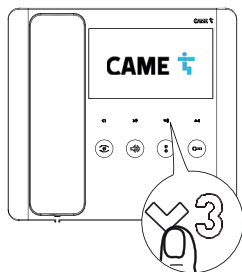


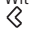
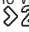

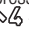
1 Press the  button as many times as the number of rings you want (from 1 to 12 rings, depending on the chosen melody).

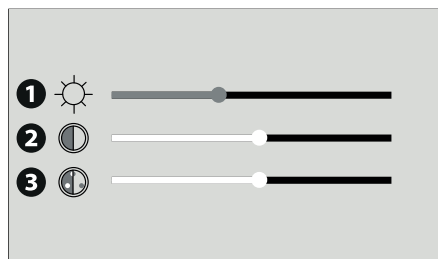
 Three seconds after the button was last pressed, the video receiver will simulate a call with the chosen number of rings.

2 Press  to confirm your choice and exit configuration.

Adjusting brightness, contrast and colour



With the video active, press any one of the following buttons: , ,  or  to view the video settings menu.



From this screen, you can view and change the video parameters.

- 1 Brightness
- 2 Contrast
- 3 Saturation

Use the  and  buttons to select one of the parameters.

Use the  and  buttons to increase/decrease the value of the selected parameter.

CAME 

CAME.COM

CAME S.P.A.

Via Martiri della Libertà, 15
31030 Dosson di Casier
Treviso - Italy

Tel. (+39) 0422 4940

Fax (+39) 0422 4941

info@came.com - www.came.com